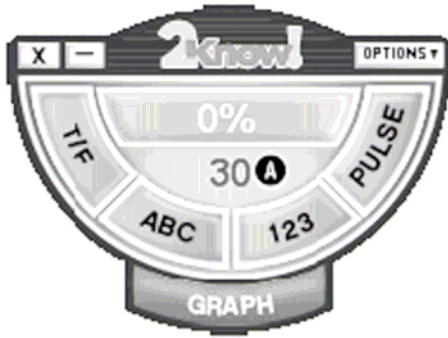


Using CRS with 2Know!



Assuming that you have had 2Know! software downloaded you are ready to begin.

2Know! enables teachers to assess whole class understanding. It gives a 'floating toolbar' that sits over any software.

If you want to use a projected image onto a whiteboard or projector screen, and do not wish to keep individual student records of responses, then 2Know! provides a simple and effective tool. Students will not need to enter individual ID numbers since the system recognises that the responses are anonymous.

Get Ready for the Session

First, connect the Renaissance Receiver to your computer via the USB cable supplied and set the Receiver name. Make sure that neither AccelTest nor the Renaissance Responder program are running.

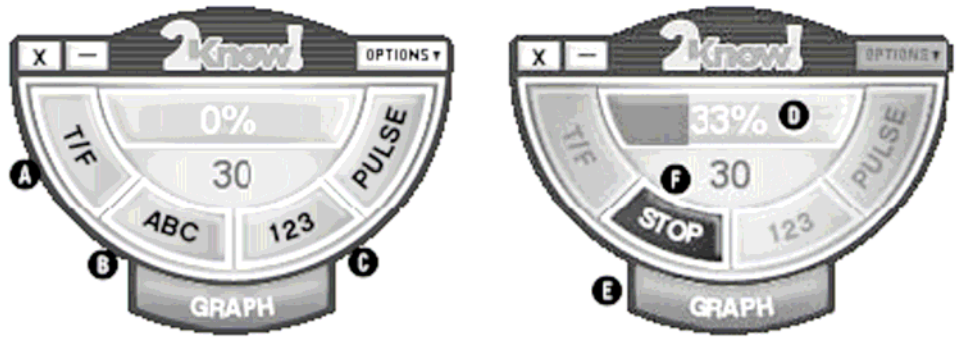
Start the session

Ask students to turn on their Responders.

With **Join Session** highlighted, students press **Select** on their Responders.

Students highlight Receiver name using the up and down arrows and press **Select**. The 2Know! toolbar on your PC's screen shows you how many students have connected.

Ask the Questions



Ask or show students the question.

Then, press or click A for true/false **T/F**, B for multiple-choice **ABC**, or **C** for numeric response **123**. Press Enter to confirm your choice

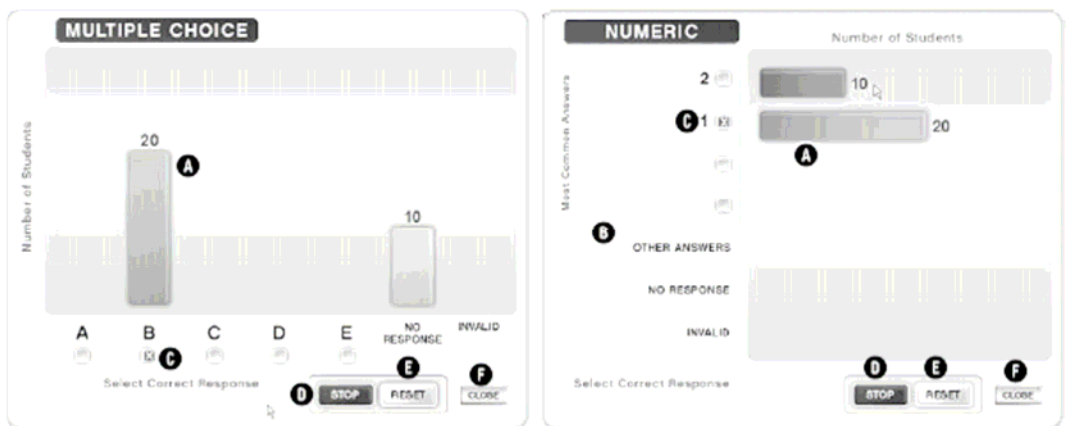
Ask students to choose or enter their answers on the responders and then they also need to press **Enter** to **confirm their choice**.

Watch the toolbar **D** to see the percentage of students who have answered the question.

Press or click **Graph E** to see a graph that shows the answers the students have chosen. Click Enter to confirm your choice

Press or click **Stop F** when you want to stop accepting answers. Again, click Enter to confirm your choice

Use the Graph



The bars show you how many students have chosen each answer.

For numeric response questions, the four most common answers are shown, and others are grouped together in "Other Answers."

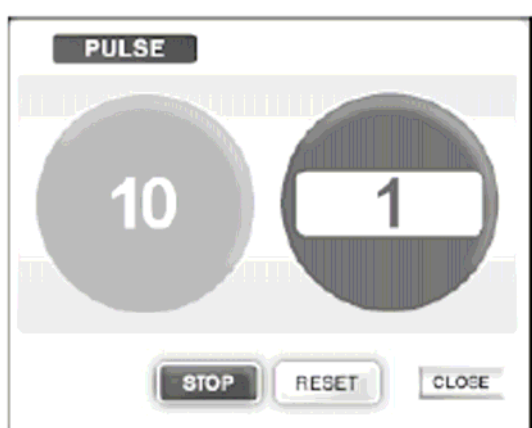
If you want to show the correct answer, click the box for the answer to check it. (You can change the correct answer.)

Press or click **Stop** to stop accepting answers.

Reset deletes all answers so students can answer the question again.

Close takes you back to the toolbar.

'Pulse' allows the teacher to quickly and simply check understanding. So, for example pupils can be asked to select green - 'Yes I've understood' or red - 'No I didn't understand' and from the results the teacher can decide whether to move on or to re-teach.



Press or click **Pulse** to check if students are ready to go on to the next concept.

Students press Yes (green) or No (red), then Enter on their Responders. Watch the toolbar to see the percentage that have answered.

Press or click **Stop** to stop accepting answers.

Press or click **Graph** to see a graph such as the one shown here. The red circle shows how many students chose No. The green circle shows how many chose Yes.

Use the Teacher Responder Feature



The 2Know! Toolbar options allow you to designate one of your Responders as a teacher Responder so that you can then use that Responder to control the toolbar program from anywhere in your classroom. Follow these steps to set up and use a teacher Responder:

Click **Options A** and choose **Teacher Responder**.

If the program tells you that you haven't assigned a Responder to the teacher, click **Assign**.

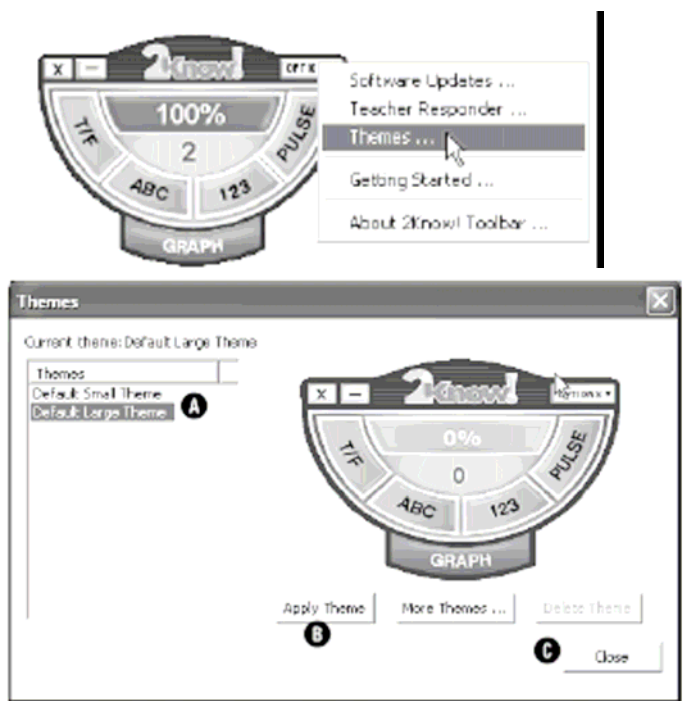
Then, start the Responder, join the session, and enter the PIN that you are shown on the screen. When the program shows the ID, click **Close**.

The Responder will list your options. Press **A** to ask a question, **B** to show a graph, or **C** to minimize the toolbar; then, press **Enter**.

To ask a question:	While viewing a graph:
<ol style="list-style-type: none"> 1. Press A, then Enter. 2. Press the letter for the question type and press Enter. 3. After students answer, press A and Enter to stop receiving responses. If you want to see a graph, press B and Enter. To minimize the toolbar, press C and then Enter; to restore it again, press C, then Enter again. 	<ul style="list-style-type: none"> • Press A and Enter to stop receiving responses. • Press B and Enter to close the graph. • Press C and Enter to reset (start over) and receive new responses. • Press D and Enter to mark the correct answer. Then, enter the answer.

Change the Size of the Toolbar (Theme)

2Know allows you to have a toolbar using one two different sizes. In order to change the size follow the steps below.



Click **Options** and choose **Themes**.
 Click the size you want (small or large)
 Click **Apply Theme**
 Click **Close**

Get Software Updates

Click **Options** and choose **Software Updates**.

If you want to allow weekly software updates, make sure the box is checked **A**

If you want to check for updates now, click **Check Now B**

Click **Close C**

