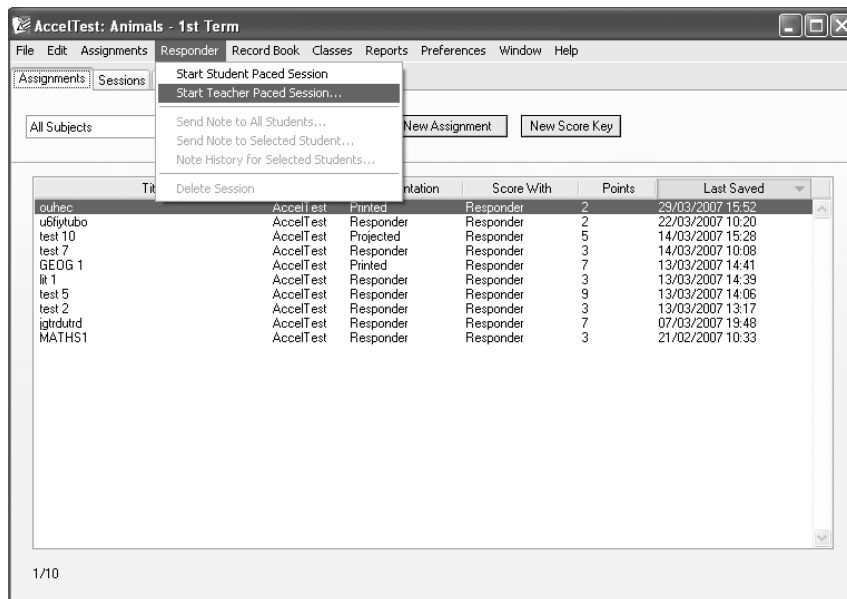


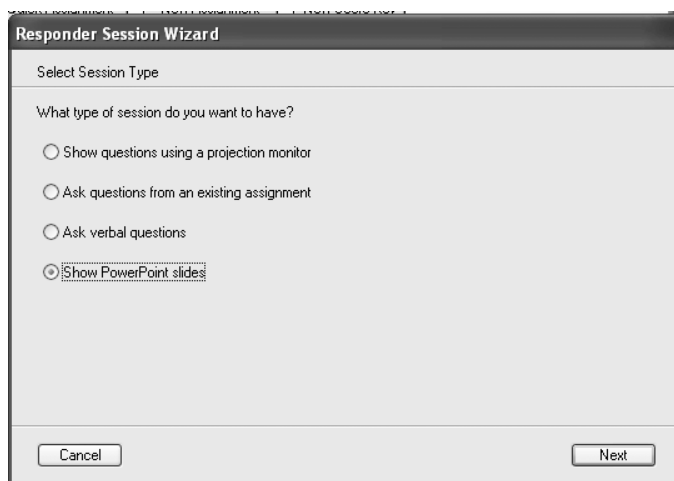
# Using CRS with PowerPoint and other resources

A step by step guide for maximising your teaching

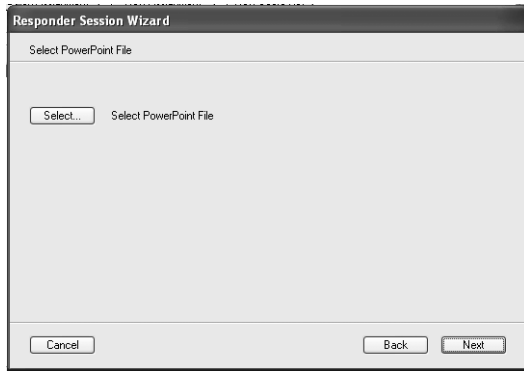
1. Click on 'Responder' and select 'Start Teacher Paced Session'



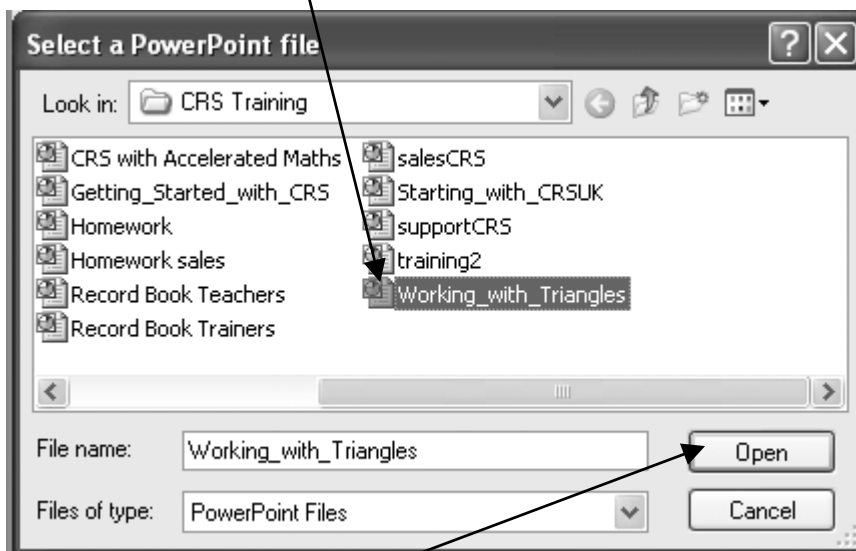
2. From the presented menu select 'Show PowerPoint slides'



3. You can now select your PowerPoint presentation from stored files on your computer. Click 'Select' to access the files.

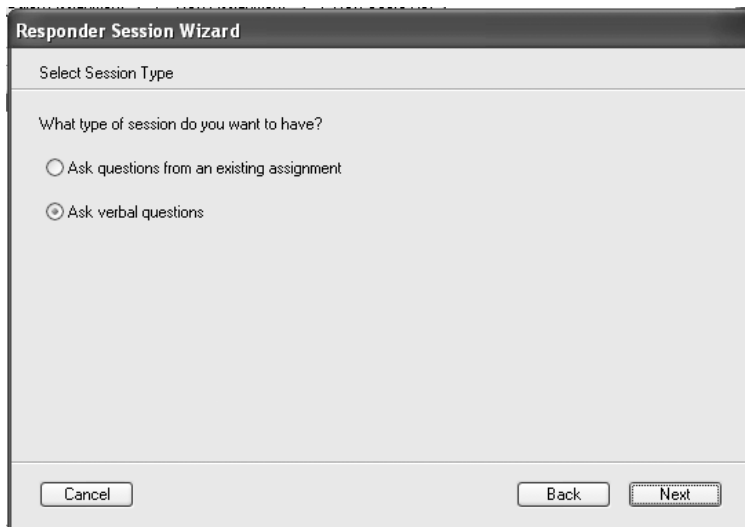


4. Once you have found the PowerPoint presentation you wish to use, click on it so that its title appears in the File name



Click 'Open' to continue.

Unless you have specially prepared a set of questions to run with your PowerPoint presentation you will need to select 'Ask verbal questions'

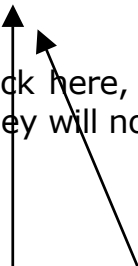


You now have a number of options

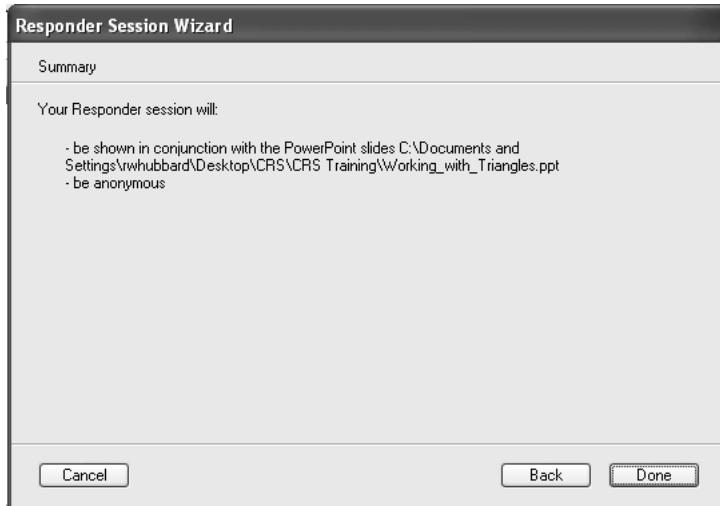
Click here to score students' responses. They will need to use their ID numbers to respond



Click here, then here, to allow students' responses to be anonymous. They will not need to use their ID numbers.



You will be shown a summary of the PowerPoint slides you have selected and how students will use their responders in the session. Click **'Done'** to activate the assignment.



You will find you have a PowerPoint presentation at the top of the screen and a CRS toolbar at the bottom of the screen.

