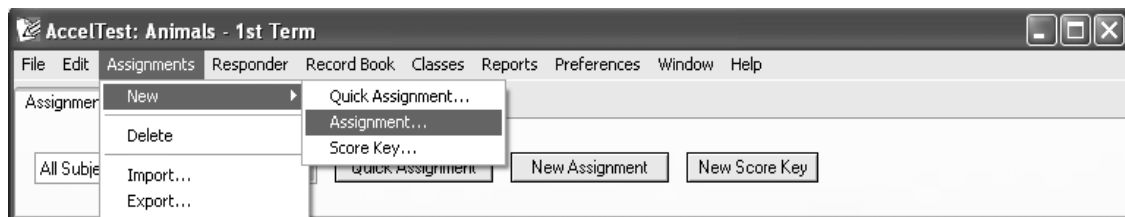


Creating Printed Tests

Printed tests can be created so that the responder records answers by using printed pages to display the questions.

In AccelTest click on Assignments and go to New Assignment.

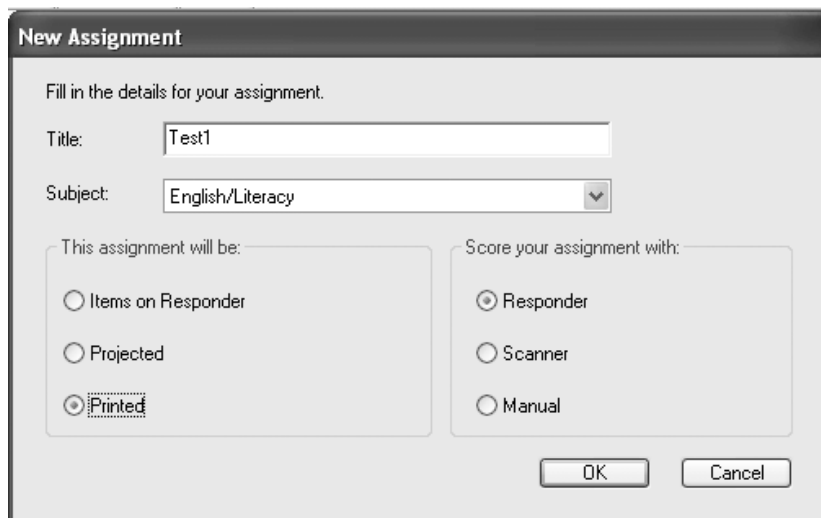


In the New Assignment box give the assignment a title.

Find 'This assignment will be' and click **Printed**.

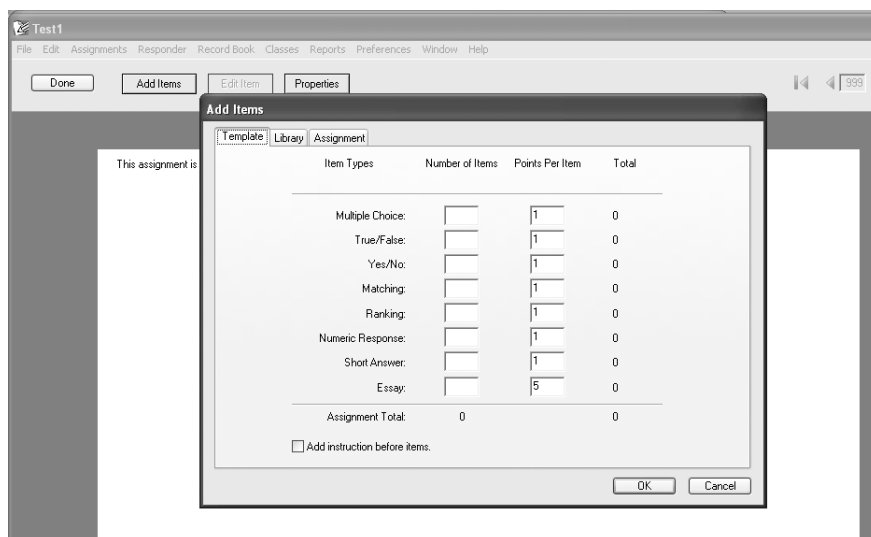
You will find that all the 'Score your assignment with' options become active.

Select Responder and then click **OK**.

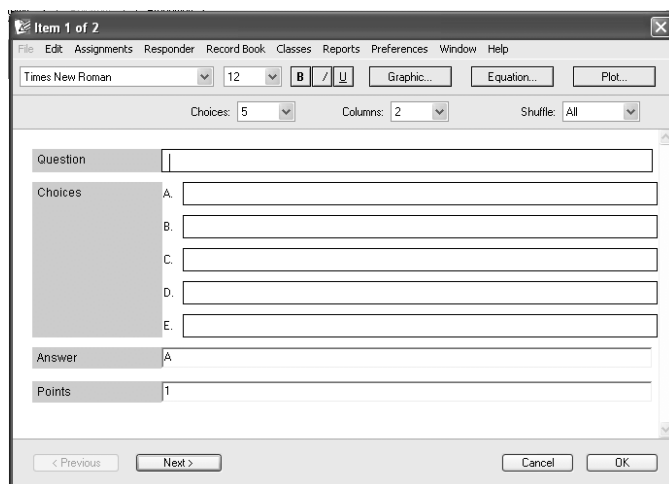


The layout for creating your questions will appear.

Select the types of question you want to ask and complete them as usual.



The questions will appear as a printed sheet behind the table.



Create the questions you wish to have answered and, once completed, make certain that you save your assignment

When you select this assignment you will need to follow the steps to match the assignment form number with the responder as in Accelerated Maths type assignments. (see pages)

With questions only displayed on the responder

