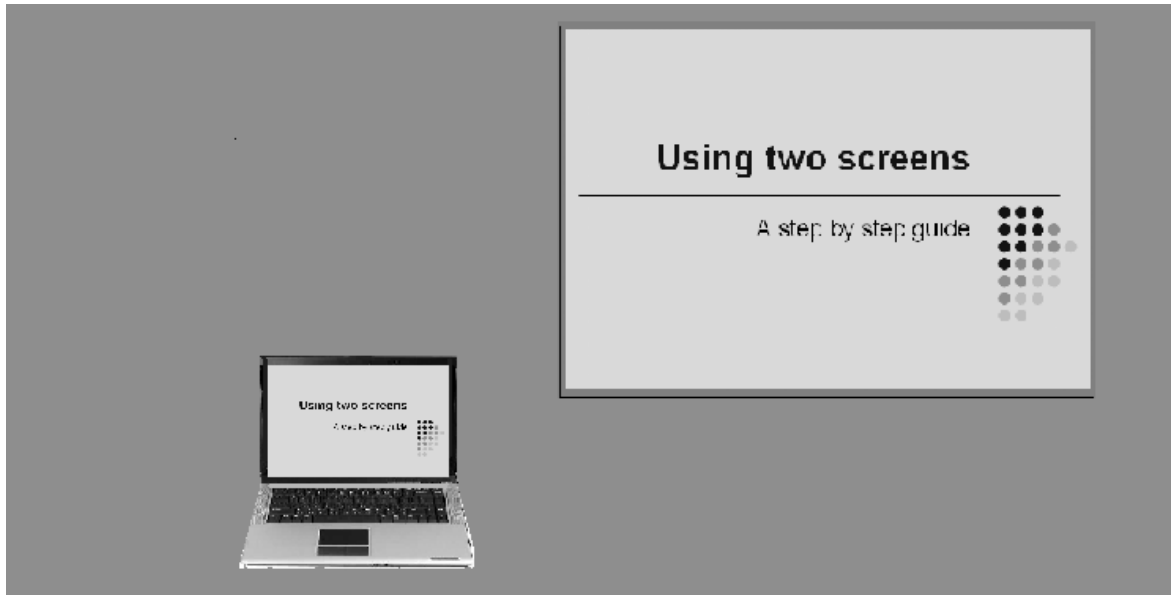


Using two screens



Usually, when you are using a laptop with a digital projector, the image that you see on the projected screen is the same as that on the laptop's screen.

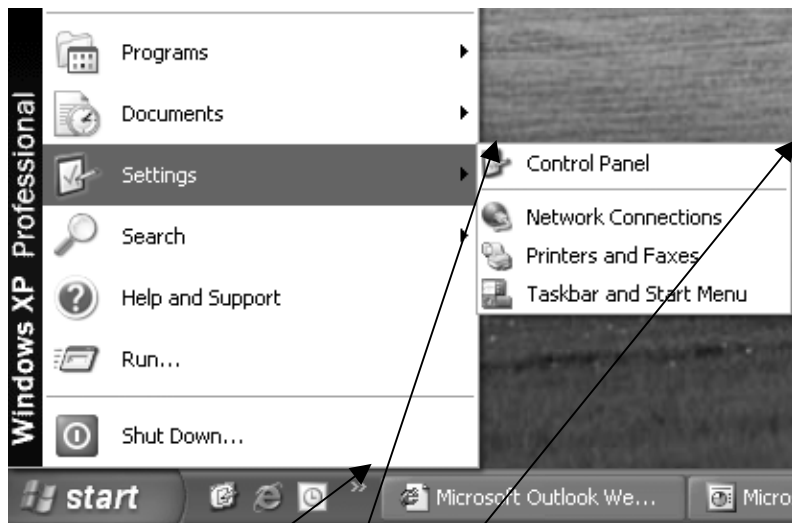


But it is possible to run quite different sets of images on each display.

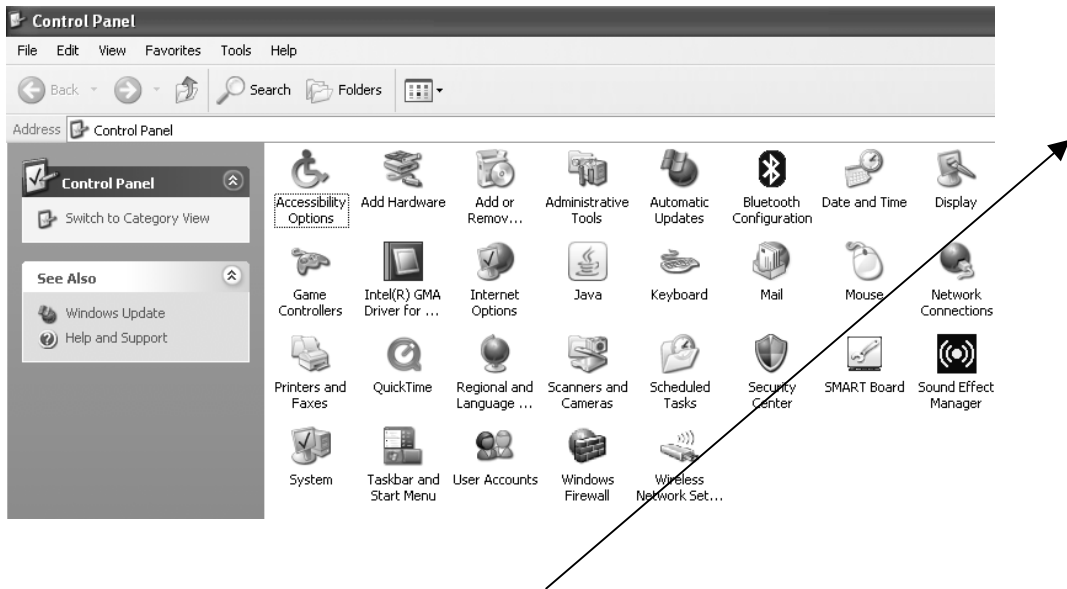
This will only work if the computer you are using is a laptop, or a desktop computer with 2 video cards.

How it's done

Connect your secondary screen, either an actual screen or a projector

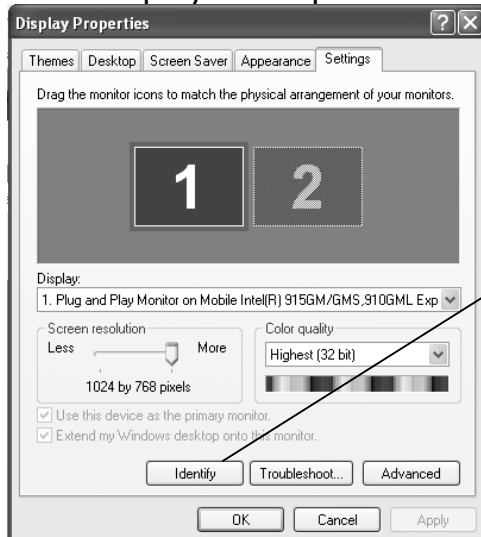


1. Click on start
2. Move up to **Settings**
3. Select **Control Panel**



4. From the Control Panel Menu select **Display**

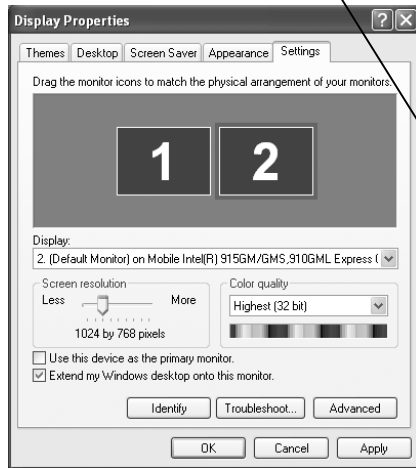
5. In Display Properties select the settings menu.



6. You will see two screens displayed.

7. Click on screen 2

8. Click the box 'Extend Windows desktop into this monitor' and then click OK



You should find that your laptop will show the normal desktop and the projected image shows a 'continuation'. You are now able to move applications etc. onto the projected screen by dragging them across from the laptop