

**NEW!**

# dana™ wireless

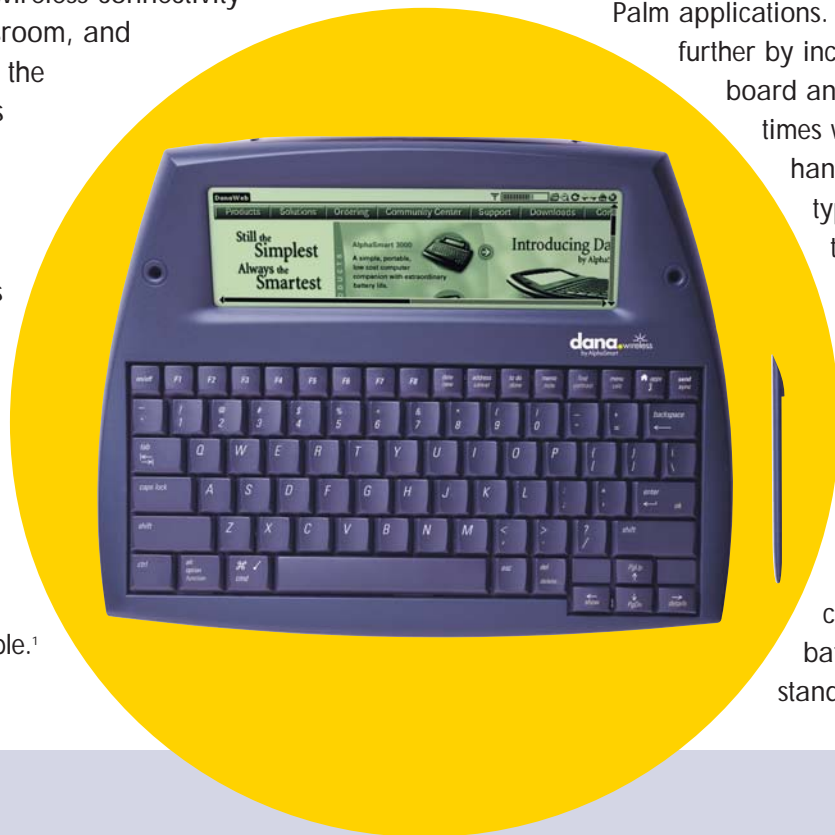
by AlphaSmart

**The Palm Powered laptop alternative that's truly affordable—and now wireless**

Dana Wireless offers the convenience and affordability of a hand-held device, and is now available with Wi-Fi (802.11b) providing wireless connectivity for home, office, classroom, and campus—or in any of the thousands of HotSpots around the country.<sup>1</sup>

**Portable, durable, and wireless.**

Dana Wireless continues our tradition of ultra-light portability and simplicity. With built-in Wi-Fi technology, getting connected has never been easier. Browse the web or check your email without a modem or cable.<sup>1</sup>



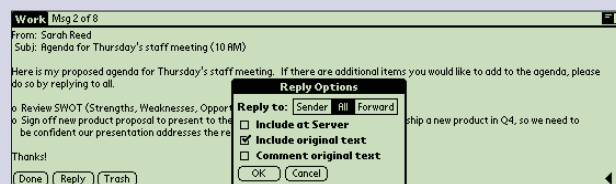
**The Power of PalmOS.**

With Palm OS, you have access to thousands of Palm applications. And we push Palm OS further by including a full-size keyboard and a screen that's 3.5 times wider than the typical hand-held screen. You can type or enter data using the keyboard or by writing with the Dana stylus directly onto the screen.

Dana runs on a rechargeable battery pack or its AC adapter (both included). If you're in a pinch, you can easily replace the battery pack with three standard AA batteries.



- Dana is lightweight and durable. Easy to carry in a briefcase, backpack, purse, or under your arm.
- Dana is the ideal solution for writing papers, taking notes, collecting data, or organising personal information.
- AlphaWord (a full-featured word processor) and the Palm eBook reader give you the power to read and write anywhere. Easily synchronise documents with your desktop computer.
- Date Book, Address Book, To Do List, and other software provide convenient access to important personal information.



*The Dana Internet Solutions Pack comes with the Internet tools you need, like the wide screen Dana web browser, email and instant messaging programs.*



<sup>1</sup> May require additional service plan and/or access point equipment. Sold separately by third party vendors. Rates may vary.

IrDA port (for beaming to and from other IR-enabled devices).

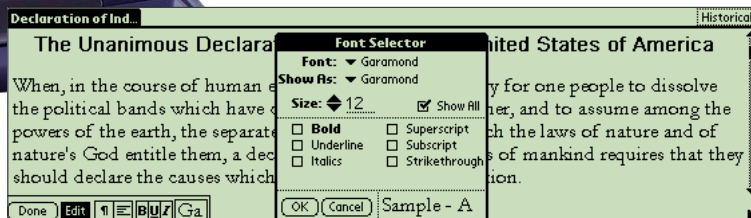
AC power adapter (for charging the internal batteries or running without batteries).

Two expansion slots for adding memory or MultiMediaCard and Secure Digital cards.

Made of polycarbonate ABS and weighing in at 2 pounds, Dana is lightweight, durable, and comfortable.

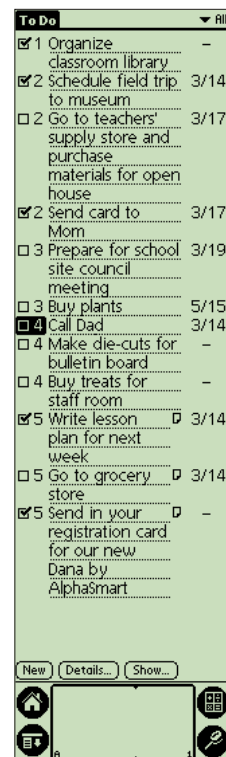
Integrated Wi-Fi with embedded antenna.

Two USB ports (for printing or connecting to a personal computer).



Thousands of Palm OS applications are compatible with Dana. Many can take advantage of Dana's 560 x 160-pixel wide-screen display.

Tap the rotate screen button, and you can use the Dana like a clipboard. (Display rotates 90 degrees in either direction.)



## Specifications

### Dana comes with:

- Rechargeable battery pack
- AC adapter for charging or using Dana
- CD-ROM with Palm™ Desktop software, additional applications, fonts and other bonus software
- USB cable for synchronising with your Macintosh or Windows computer (no cradle required)
- Infrared port for beaming data and software with another Dana or Palm-powered device
- Support for MultiMediaCard and SD cards provides exceptional expandability. The two slots let you add memory, attach peripherals, backup your data, and more
- Documentation, including Getting Started manual
- Stylus for onscreen data entry using Graffiti®2, the simple, easy-to-learn power writing software from Palm

### Size/Weight

- Weight: 2.0 lbs. (0.91 kg)
- Height: 1.9 in. (4.8 cm)
- Width: 12.4 in. (31.4 cm)
- Depth: 9.3 in. (23.5 cm)

### Power Options

- Rechargeable battery pack
- AC adapter
- 3 AA batteries (not included)

### Display

- Advanced LCD with backlight —560 x 160 pixels (3.5 times wider than the typical handheld device)

### Expandability

- 2 expansion slots for MultiMediaCard or Secure Digital cards

### Applications

- Dana wide screen versions: Address Book, Date Book, To Do List and Memo Pad
- AlphaWord, a full-featured word processor with spell-checker and thesaurus, compatible with Microsoft Word file format
- Print from Palm applications to many USB and IrDA-enabled printers, including network printer support
- Palm Reader (for eBooks)
- Productivity Pack includes software that allows you to work on Word, Excel and PowerPoint files and synchronises with your desktop
- Trial versions of Palm software (wide-screen enabled) are included on CD-ROM

### Desktop Import/Export

- Import CSV, Tab delimited, TXT, vCard, and vCal
- Synchronise appointments, to-do list, memos, and word processing documents

### Operating System

- Palm OS version 4.1.2

### Flexible Storage Capacity

- Highly efficient operating system with 16MB of memory stores thousands of addresses, years of appointments, hundreds of to-do items, memos, and documents, and more than 50 applications (based on average application size of 50K)

### System Requirements for Palm Desktop Software

- Pentium class PC running Windows 98/2000/ ME or XP, 8 MB RAM minimum (16 MB recommended) and 50 MB available hard disk space; or
- Macintosh with PowerPC processor and Mac OS X (version 10.1.2 or higher) or Mac OS 9 (version 9.1 and higher), 25MB hard disk space and 12 MB of available RAM
- One available USB port
- CD-ROM drive